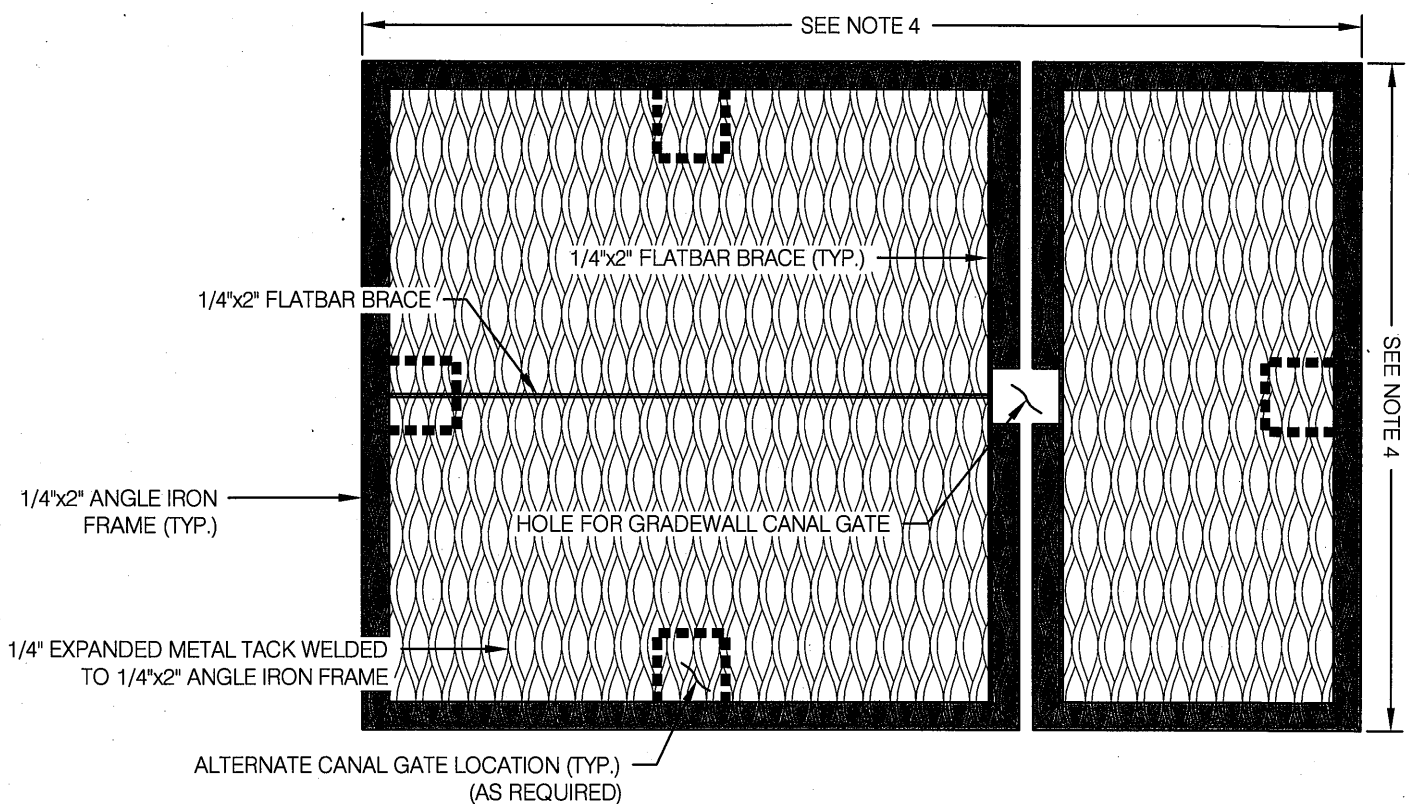


**ARVs, TURNOUT STANDS & SPILLS**



**CONTROL STRUCTURES & TURNOUT BOXES**

**NOTES:**

1. SAFETY SCREENS SHALL BE PLACED ON ALL ARVs, TURNOUT STANDS & BOXES, SPILL AND CONTROL STRUCTURES AS DIRECTED BY THE ENGINEER.
2. EACH SCREEN SHALL BE PROPERLY PREPPED AND PAINTED OR GALVANIZED PRIOR TO INSTALLATION AS DIRECTED BY THE ENGINEER.
3. IN DEVELOPED AREA OR AS DIRECTED, THE SCREEN SHALL BE SECURELY MOUNTED TO THE CONCRETE STRUCTURE OR STAND.
4. STRUCTURES OR STANDS WITH AN INTERNAL GROOVE, THE OUTSIDE DIMENSIONS SHALL BE ONE INCH (1") LESS THAN THE RECESS. FOR STRUCTURES OR STANDS THAT ARE "FLUSH CUT", THE OUTSIDE DIMENSIONS SHALL BE ONE INCH (1") GREATER THAN THE STRUCTURE OR STAND.
5. PRIOR TO FABRICATION, A DIMENSIONED DRAWING SHOWING THE OVERALL SCREEN CONFIGURATION SHALL BE SUBMITTED TO THE ENGINEER FOR APPROVAL.



NOTE: CALL U.S.A.  
AT LEAST 48 HOURS  
PRIOR TO EXCAVATION  
1-800-642-2444

REFER TO THE  
STANDARD SPECIFICATIONS

APPROVED BY:  
*[Signature]*  
DIRECTOR OF ENGINEERING

**SAFETY SCREEN**

RCE #66517

*7-18-12*  
DATE

DETAIL  
W-26.5

REVISION  
3  
7-18-12