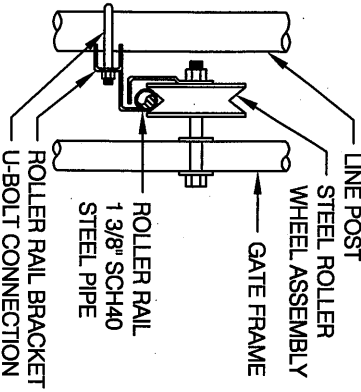
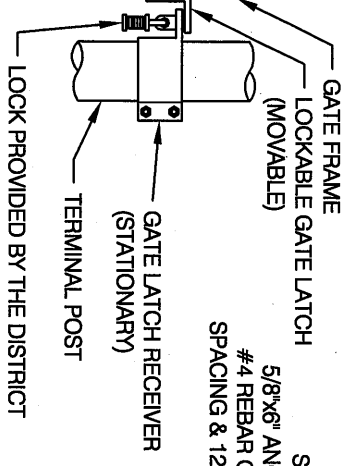


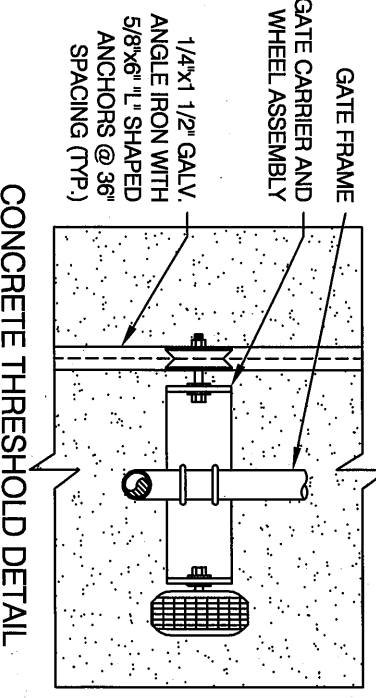
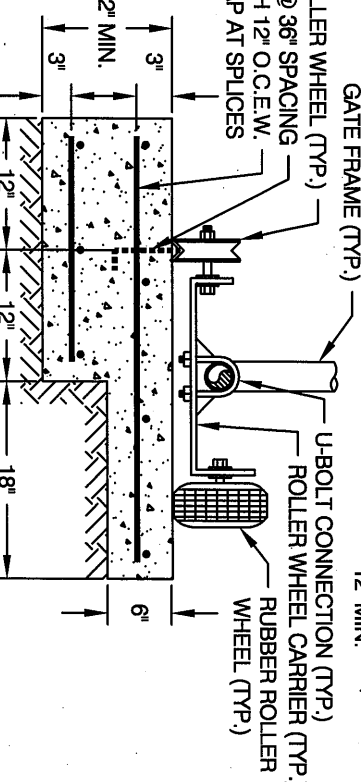
ROLLER RAIL DETAIL



GATE LATCH DETAIL



CONCRETE THRESHOLD CROSS SECTION



NOTES:

1. ALTERNATE MANUFACTURING DETAILS NOT COVERED ON THIS DRAWING SHALL BE SUBMITTED BY THE CONTRACTOR FOR APPROVAL BY THE DISTRICT ENGINEER.
2. ADJUSTABLE TIGHTENERS SHALL BE TURNBUCKLE OR EQUIVALENT, HAVING 6" MINIMUM TAKE-UP.
3. SECURE GALVANIZED CAP TO POST WITH 1/4" Ø ROUND HEAD RIVETS.
4. CHAIN LINK FABRIC SHALL BE 72" HIGH OF 9 GA. CARBON STEEL WIRE, WOVEN IN A 2" MESH AND GALVANIZED AFTER WEAVING.
5. TYPICAL RAIL WIRE PANELS SHALL BE USED AT ALL TERMINAL POSTS.
6. ALL HARDWARE SHALL BE GALVANIZED.
7. BARBED WIRE SHALL BE 2 STRANDS OF GALVANIZED TWISTED 12.5 GA. CARBON STEEL WIRE. BARBS SHALL BE FOUR POINT, 4" ± CENTERS.
8. ALL CONCRETE SHALL HAVE A MINIMUM COMPRESSIVE STRENGTH OF 3000 PSI. ALL CEMENT SHALL BE TYPE II PORTLAND, WITH A MINIMUM OF 5 SACKS OF CEMENT PER CUBIC YARD OF CONCRETE.
9. FOR S.I.D. STANDARD FENCING SEE DETAIL W-46.

TYPICAL SINGLE ROLLING GATE



NOTE: CALL U.S.A. AT LEAST 48 HOURS PRIOR TO EXCAVATION 1-800-642-2444

REFER TO THE STANDARD SPECIFICATIONS

APPROVED BY: *[Signature]*
DIRECTOR OF ENGINEERING

RCE #66517

7-18-12
DATE

DETAIL
W-50

REVISION
3
7-18-12